

DATASHEET:

HA-SLIDE OVER ADAPTER

STAINLESS STEEL SLIDE OVER ADAPTER.

The HA-Slide Over Adapter can be used to turn an existing mast into a Holland Aviation windsock assembly. Simply place the HA-Slide Over Adapter over the existing mast and lock with 3 bolts. The Holland Aviation swivel frame or internal lighting unit with windsock, can then easily be placed into the HA-Slide Over Adapter (see other side for pictures).

The HA-Slide Over Adapter comes in two sizes; the 60 for masts up to \varnothing 56 mm and the 76 for masts up to \varnothing 72 mm.

The HA-Slide over Adapter can turn any existing mast in an unlighted, internally lighted, or externally lighted windsock assembly. The lighted windsock assemblies are available for a 90-240VAC or a 6,6A power supply.

The HA windsock sleeves have been proven to withstand wind speeds in excess of 145 km/h (75 knots). The windsock fabrics have been tested for mechanical strength, UV resistance and colour fastness.



SLIDE OVER ADAPTER	60	76
OUTSIDE DIAMETER	\varnothing 60 mm	\varnothing 76,1 mm
FOR MASTS WITH OUTSIDE DIAMETER	Max \varnothing 56 mm	Max \varnothing 72 mm
MATERIAL	Stainless steel AISI 316L	
WINDSOCK	\varnothing 30cm up to and including \varnothing 100cm, colour red/white (ICAO) or orange (FAA), double stitched with reinforced front hem and grommets. (see other side for our standard windsock sizes)	
WINDSOCK MATERIAL	Polyester, PU coated, 1approx. 185 gr/m ²	
WINDSOCK FRAME MATERIAL	Stainless steel AISI 316L	
SWIVEL HEAD	2 heavy duty sealed stainless steel bearings	
LIGHTING STYLES	Unlighted, externally lighted, internally lighted	
POWER SUPPLY	90-240VAC (50/60 HZ) or 6,6A	
POWER CONSUMPTION	Internal Lighting: 12 Watt External Lighting: 40 Watt Obstruction Light: 5 Watt	
INGRESS PROTECTION	IP65	
AMBIENT TEMPERATURE	-40°C to +60°C	
COMPLIANCES	ICAO Annex 14 Vol. I Aerodromes ICAO Annex 14 Vol. II Heliports FAA AC150/5345-27 UK CAA CAP 168 and CAP 437 EASA ADR EASA CS-HPT-DSN	
HS CODE (CUSTOM TARIFF)	90158020	



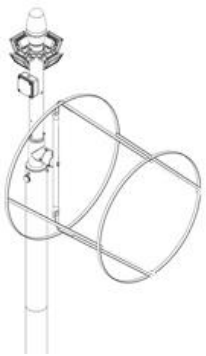
Holland Aviation
Daniëlsweg 40
4451 HW Heinkenszand
The Netherlands

Tel. +31 (0)113 613467
Fax. +31 (0)113 613570
Email: info@hollandaviation.com
www.hollandaviation.com

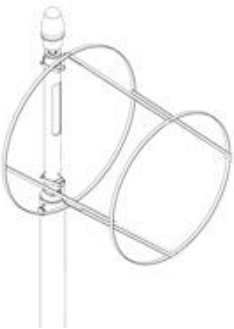




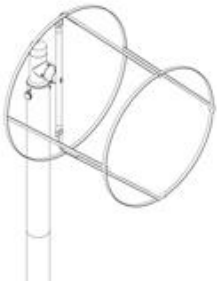
STANDARD WINDSOCK SIZES	Ø300 x 1200mm	Ø700 x 2000mm
	Ø300 x 1500mm	Ø700 x 2000mm reinforced leather mouth
	Ø300 x 1800mm	Ø900 x 3600mm
	Ø400 x 2500mm	Ø900 x 3900mm
	Ø450 x 2450mm	Ø900 x 4500mm
	Ø500 x 1500mm	Ø1000 x 5000mm
	Ø500 x 1500mm with push button	Ø18" x 8ft (FAA size 1)
	Ø600 x 2400mm	Ø36" x 12ft (FAA size 2)
	Ø600 x 3000mm	Ø36" x 8ft
	Ø650 x 3000mm	Or any other custom made size



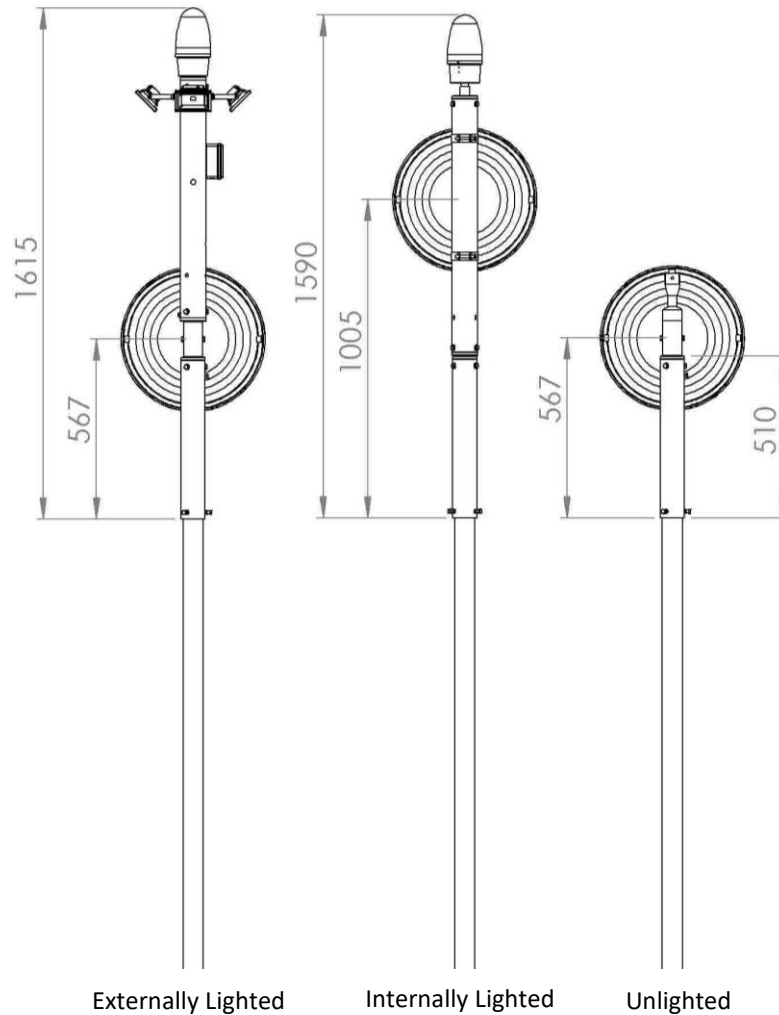
STYLE I-A: EXTERNALLY LIGHTED



STYLE I-B: INTERNALLY LIGHTED



STYLE II: UNLIGHTED



Holland Aviation
 Daniëlsweg 40
 4451 HW Heinkenszand
 The Netherlands

Tel. +31 (0)113 613467
 Fax. +31 (0)113 613570
 Email: info@hollandaviation.com
www.hollandaviation.com

